

Project: Dasselaar Asian Food

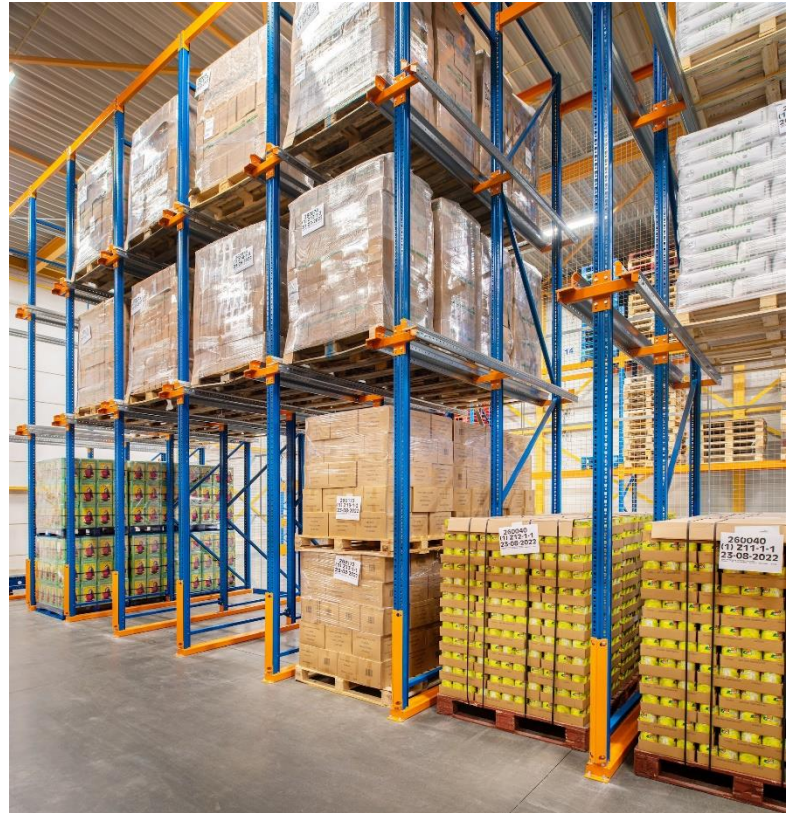
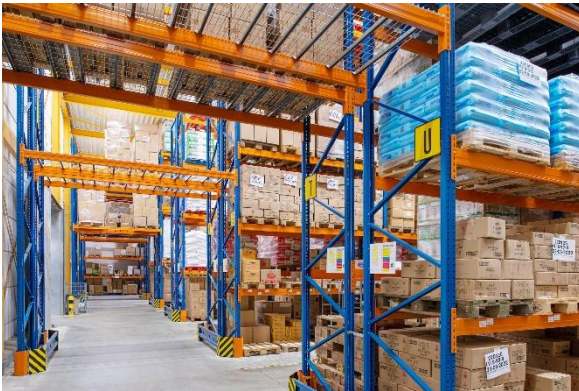
Project Dasselaar in Nijkerk.

In this document you can read more about the realized project between Dasselaar Asian food and Nedcon.

Dasselaar Asian Food is a wholesaler, based in Nijkerk, that deals in Asian products. The success of this typical family business, which started in the 1960s selling eggs to all kinds of sectors, comes from responding to the demand that arose from Chinese people opening restaurants and other business in the Netherlands. In addition to eggs, other types of products were in demand. With now more than 60 years of experience, Dasselaar has developed into a provider of a total assortment to the Asian world. Their customer approach, assortment, logistics and automation make the difference.

Features of this project:

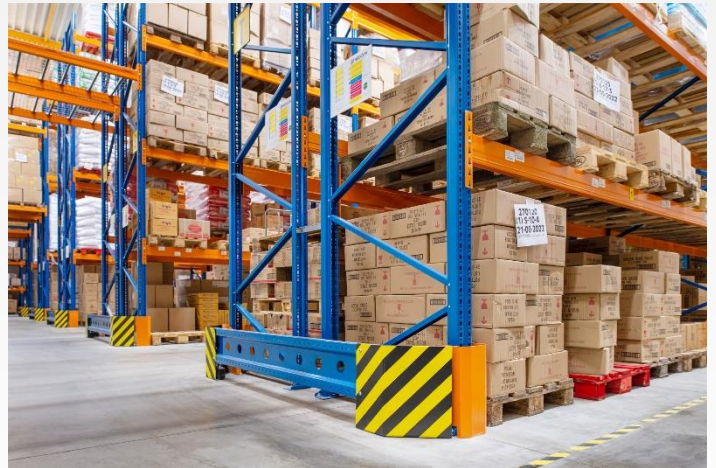
- ✓ Pallet racks supplied in various standard configurations for the purpose of flexible layout
- ✓ Closed decking supplied to create flexible pick locations
- ✓ Drive-in rack supplied allowing larger purchases through this compact storage
- ✓ Freestanding upright protectors type Defender 800* supplied to protect the uprights of pallet racks from collisions from a reach truck
- ✓ Disassembly and assembly of racking in stages so that delivery to customers could continue
- ✓ Advice on food storage, for example by using tube profiles as ground guides in the drive-in rack. These are easy to clean.
- ✓ Very good coordination between the parties involved (Dasselaar, NEDCON and assembly company) for the purpose of the passage of deliveries



NEDCON entered the picture in 2019 for the interior remodeling and expansion of the new frozen food warehouse. Due to good experience with the Account Manager in the past, Dasselaar again chose the same Account Manager to handle this remodel under her care. Dasselaar's warehouse is now fully equipped with NEDCON storage systems. This allows the wholesaler to buy larger, generate a wider assortment and realize a more efficient flow of goods. The decision to install Defenders, NEDCON's upright protection, provides for the facilitation of a working environment in which safety is a priority.

***Wondering about our DEFENDER?**

Want to know what benefits the Defender offers you and what strength rating (800, 1500 or 3000) we recommend for use in your warehouse? [Click here](#) to view our Defender landing page where you can easily calculate this yourself.



Question - Solution - Result

1. **Q:** Setting up the warehouse in a way that creates the most efficient flow of goods and realizing a solution that allows employees to perform work in a safe manner.
2. **Solution:** A redesigned warehouse that allows for more storage space and more efficient storage and shipping of goods. With the installation of Defenders, security in the warehouse is ensured.
3. **Result:** An efficient and safe warehouse that makes Dasselaar ready for the future!