

## **The Depth Beam Light**

**Explanation of the most  
important changes**

This document explains the main changes to the updated Depth Beam Light. What has changed? What does it mean for you and what are the new applications?

### **The most important adjustments of the new Depth Beam Light**

NEDON is constantly working on the further development of NEDCON products. This also applies to the Depth Beam Light.

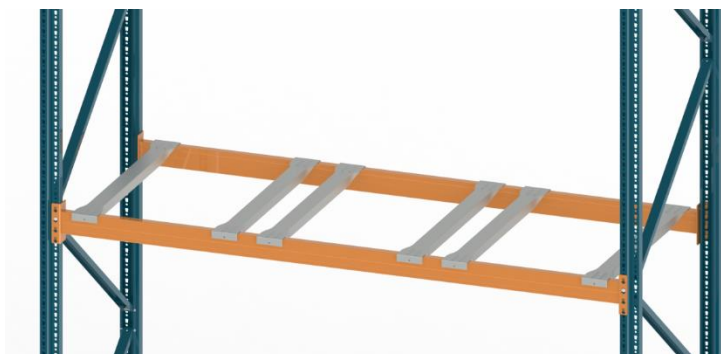
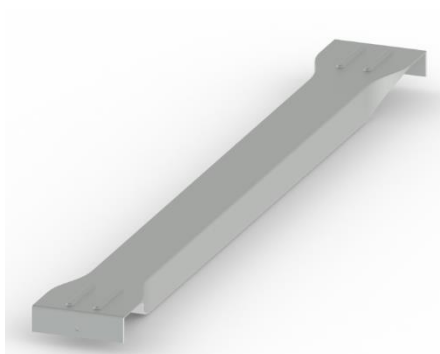
The Depth Beam Light is an open box profile made of Sendzimir. The outside ends of the Depth Beam Light are flattened and bent for a good application with the hookin beams. On the flattened part, two ribs provide extra stiffness. This application results in a 20% increase in load-bearing capacity.

The Depth Beam Light can be used for beam width 40 & 50 mm. The renewed Depth Beam Light is available in two different variants. These are as follows:

1. Frame depth 1100mm (*55935 Depth Beam Light OB805015 FD1100, sendz*)
2. Frame depth 800mm (*55934 Depth Beam Light OB805015 FD800, sendz*)

### **The benefits of these developments for you are:**

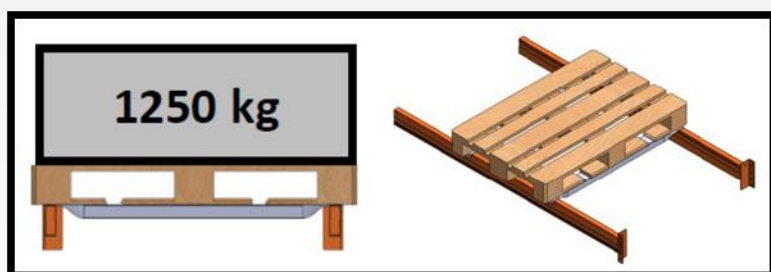
1. The Depth Beam Light can be applied to both the 40 and 50mm beam.
2. The price of the new Depth Beam Light is more cost-effective.
3. The new design has a simpler installation, which makes it even easier to prevent failures.



The new design of the Depth Beam Light brings new applications that can work to your advantage. Because of this development, the load situations have been renewed. They are as follows:

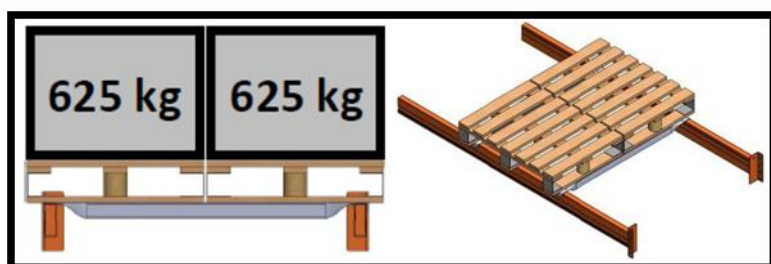
#### **Situation A:**

In the situation below, products are stored on a pallet with a poor quality. Are you storing a pallet of poor quality? The Depth Beam Light ensures that your pallet will bend less.



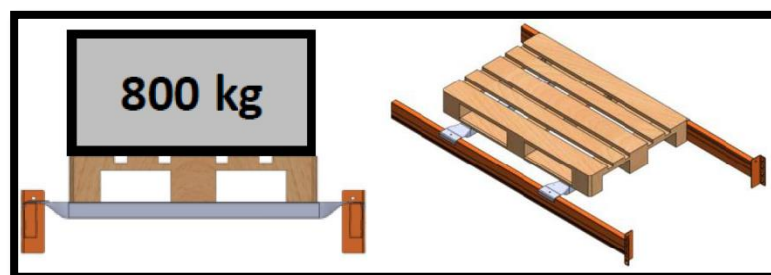
#### **Situation B:**

In the situation below, goods are stored on two Europallets rotated 90°. This way, longer products can also be stored. In this situation, two depth girders directly support the pallets.



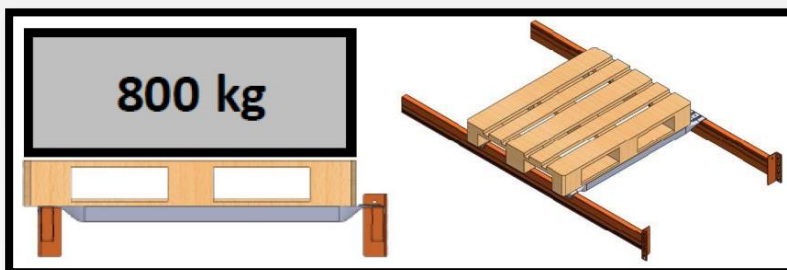
#### **Situation C:**

In Situation C, a pallet is stored with a smaller depth in relation to the frame depth. As a result, one of the depth beams cannot support the pallet directly. The Depth Beam Light solves this situation.

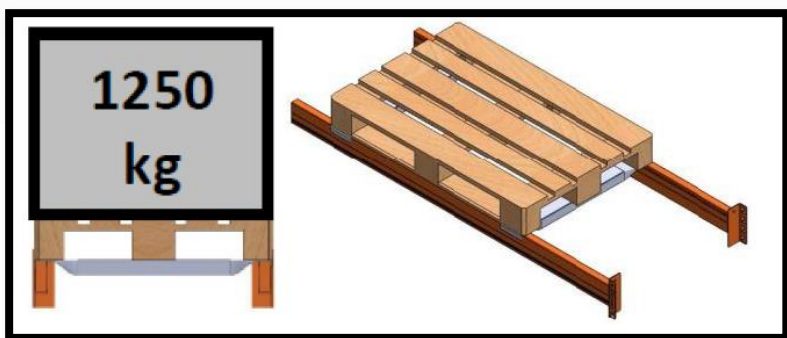


**Situation D:**

In the following situation, smaller pallets, for example a Düsseldorf or half Euro pallet, are stored in a NR1 rack with a frame depth of 1100 mm. The pallet rests on one of the beams.

**Situation E:**

In situation E, a 90° turned Europallet is stored in a NR1 rack with a frame depth of 800mm. The pallet rests on both the depth and width beams.



The above situations may apply within your organization.

Do you have questions about the Depth Beam Light or about one of the above applications? Please approach one of the employees of the Reseller team.